



TEST REPORT

NUMBER: WUXH00002013

APPLICANT: NANTONG FUJITSU MICROELECTRONIC CO., DATE: MAY 17, 2010
LTD
NO.288, CHONGCHUAN ROAD, NANTONG,
JIANGSU, CHINA
ATTN: SHEN YING

SAMPLE DESCRIPTION:

ONE(1)PIECE OF SUBMITTED SAMPLE SAID TO BE :IC.
ITEM NAME : SOL8-NT.

TESTS CONDUCTED:

AS REQUESTED BY THE APPLICANT, FOR DETAILS REFER TO ATTACHED PAGE(S)

SUMMARY:

<u>TESTED SAMPLE</u>	<u>STANDARD</u>	<u>RESULT</u>
SUBMITTED SAMPLE	WITH REFERENCE TO TEST METHOD OF IEC 62321 EDITION 1.0: 2008 AND MAXIMUM CONCENTRATION LIMITS QUOTED FROM ROHS DIRECTIVES 2002/95/EC AND AMENDMENT 2005/618/EC	PASS

TO BE CONTINUED

PREPARED AND CHECKED BY:
FOR INTERTEK TESTING SERVICES WUXI LTD.

JESSICA LU
GENERAL MANAGER



TEST REPORT

NUMBER: WUXH00002013

TESTS CONDUCTED

(A) TEST RESULT SUMMARY:

TESTING ITEM	RESULT	
	(1)	(2)
CADMIUM (Cd) CONTENT (mg/kg)	ND	ND
LEAD (Pb) CONTENT (mg/kg)	43	ND
MERCURY (Hg) CONTENT (mg/kg)	ND	ND
CHROMIUM (VI) (Cr ⁶⁺) CONTENT (mg/kg) (FOR NON-METAL)	--	ND
CHROMIUM (VI) (Cr ⁶⁺) RESULT(BY BOILING WATER EXTRACTION ON METAL) (mg/kg WITH 50cm ²)	ND	--
POLYBROMINATED BIPHENYLS (PBBs) (mg/kg)		
MONOBROMO BIPHENYLS (MonoBB)	--	ND
DIBROMO BIPHENYLS (DiBB)	--	ND
TRIBROMO BIPHENYLS (TriBB)	--	ND
TETRABROMO BIPHENYLS (TetraBB)	--	ND
PENTABROMO BIPHENYLS (PentaBB)	--	ND
HEXABROMO BIPHENYLS (HexaBB)	--	ND
HEPTABROMO BIPHENYLS (HeptaBB)	--	ND
OCTABROMO BIPHENYLS (OctaBB)	--	ND
NONABROMO BIPHENYLS (NonaBB)	--	ND
DECABROMO BIPHENYL (DecaBB)	--	ND
POLYBROMINATED DIPHENYL ETHERS (PBDEs) (mg/kg)		
MONOBROMO DIPHENYL ETHERS (MonoBDE)	--	ND
DIBROMO DIPHENYL ETHERS (DiBDE)	--	ND
TRIBROMO DIPHENYL ETHERS (TriBDE)	--	ND
TETRABROMO DIPHENYL ETHERS (TetraBDE)	--	ND
PENTABROMO DIPHENYL ETHERS (PentaBDE)	--	ND
HEXABROMO DIPHENYL ETHERS (HexaBDE)	--	ND
HEPTABROMO DIPHENYL ETHERS (HeptaBDE)	--	ND
OCTABROMO DIPHENYL ETHERS (OctaBDE)	--	ND
NONABROMO DIPHENYL ETHERS (NonaBDE)	--	ND
DECABROMO DIPHENYL ETHER (DecaBDE)	--	ND

REMARK:

mg/kg = MILLIGRAM PER KILOGRAM BASED ON DRY WEIGHT= ppm

ND = NOT DETECTED

TESTED COMPONENTS: (1) SILVERY METAL PIN. (2) BLACK BODY PLASTIC.

TO BE CONTINUED

(B) ROHS REQUIREMENT:

RESTRICTED SUBSTANCES	LIMITS
-----------------------	--------



TEST REPORT

NUMBER: WUXH00002013

TESTS CONDUCTED

CADMIUM (Cd)	0.01% (100 mg/kg)
LEAD (Pb)	0.1% (1000 mg/kg)
MERCURY (Hg)	0.1% (1000 mg/kg)
CHROMIUM (VI) (Cr ⁶⁺)	0.1% (1000 mg/kg)
POLYBROMINATED BIPHENYLS (PBBs)	0.1% (1000 mg/kg)
POLYBROMINATED DIPHENYL ETHERS (PBDEs)	0.1% (1000 mg/kg)

THE ABOVE LIMITS WERE QUOTED FROM 2002/95/EC AND AMENDMENT 2005/618/EC FOR HOMOGENEOUS MATERIAL.

(c) TEST METHOD:

<u>TESTING ITEM</u>	<u>TESTING METHOD</u>	<u>REPORTING LIMIT</u>
CADMIUM (Cd) CONTENT	WITH REFERENCE TO IEC 62321 EDITION 1.0: 2008, BY ACID DIGESTION AND DETERMINED BY ICP-OES	2 mg/kg
LEAD (Pb) CONTENT	WITH REFERENCE TO IEC 62321 EDITION 1.0: 2008, BY ACID DIGESTION AND DETERMINED BY ICP-OES	2 mg/kg
MERCURY (Hg) CONTENT	WITH REFERENCE TO IEC 62321 EDITION 1.0: 2008, BY ACID DIGESTION AND DETERMINED BY ICP-OES	2 mg/kg
CHROMIUM (VI) (Cr ⁶⁺) CONTENT (FOR NON-METAL)	WITH REFERENCE TO IEC 62321 EDITION 1.0: 2008, BY ALKALINE DIGESTION AND DETERMINED BY UV-VIS SPECTROPHOTOMETER	1 mg/kg
CHROMIUM (VI) (Cr ⁶⁺) CONTENT (FOR METAL)	WITH REFERENCE TO IEC 62321 EDITION 1.0: 2008, BY BOILING WATER EXTRACTION AND DETERMINED BY UV-VIS SPECTROPHOTOMETER	0.02mg/kg WITH 50cm ² (IN TESTING SOLUTION)
POLYBROMINATED BIPHENYLS (PBBs) & POLYBROMINATED DIPHENYL ETHERS (PBDEs)	WITH REFERENCE TO IEC IEC 62321 EDITION 1.0: 2008, BY SOLVENT EXTRACTION AND DETERMINED BY GC/MS AND FURTHER HPLC CONFIRMATION WHEN NECESSARY.	5 mg/kg

DATE SAMPLE RECEIVED: MAY 12, 2010

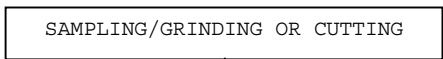
TESTING PERIOD: MAY 12, 2010 TO MAY 14, 2010

TO BE CONTINUED

(D) MEASUREMENT FLOWCHART:

TEST FOR Cd/Pb/Hg/Cr (VI)/PBBs/PBDEs CONTENTS

REFERENCE STANDARD: IEC 62321 EDITION 1.0: 2008



Intertek Testing Services Wuxi Ltd.

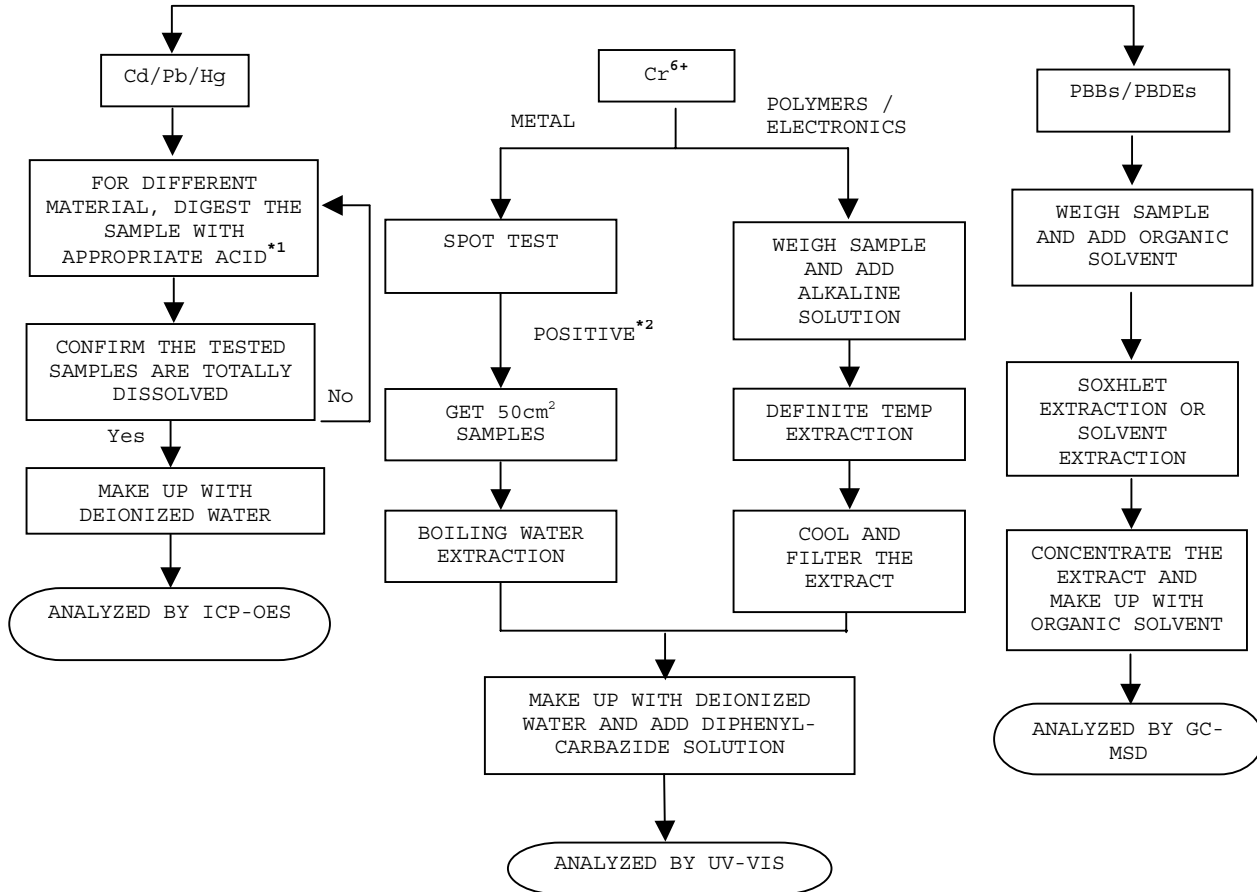
No.8 Fubei Road, Xishan Economic Development Zone,
Wuxi 214101, Jiangsu, China

Tel: +86 510 8821 4567 Fax: +86 510 8820 0428 E-mail: consumergoods.wuxi@intertek.com

TEST REPORT

NUMBER: WUXH00002013

TESTS CONDUCTED



CHEMIST: INORGANIC (ANN LUO/FRED WANG/ALLY WAN)
 ORGANIC (JENNY XU/CHERRY SUN)

REMARKS:

*1: LIST OF APPROPRIATE ACID:

MATERIAL	ACID ADDED FOR DIGESTION
POLYMERS	HNO ₃ , HCl, HF, H ₂ O ₂ , H ₃ BO ₃
METALS	HNO ₃ , HCl, HF
ELECTRONICS	HNO ₃ , HCl, H ₂ O ₂ , HBF ₄

*2: IF THE RESULT OF SPOT TEST IS POSITIVE, CHROMIUM VI WOULD BE DETERMINED AS DETECTED.

TO BE CONTINUED



TEST REPORT

NUMBER: WUXH00002013

TESTS CONDUCTED
PERFLUOROOCTANE SULFONATES (PFOS) AND PERFLUOROOCTANOIC ACID (PFOA)
CONTENT:

BY SOLVENT EXTRACTION AND FOLLOWED BY LIQUID CHROMATOGRAPHY-MASS SPECTROMETRIC (LC-MS) ANALYSIS.

<u>COMPOUND</u>	<u>RESULT (ppm)</u>	
	(1)	(2)
PERFLUOROOCTANE SULFONATES	<1	<1
PERFLUOROOCTANOIC ACID	<1	<1

REMARK : < = LESS THAN
ppm = PARTS PER MILLION = mg/kg
DETECTION LIMIT = 1.0 ppm

TESTED COMPONENTS:

- (1) SILVERY METAL PIN.
- (2) BLACK BODY PLASTIC.

DATE SAMPLE RECEIVED :MAY 12, 2010

TESTING PERIOD :MAY 12, 2010 TO MAY 14, 2010

TO BE CONTINUED



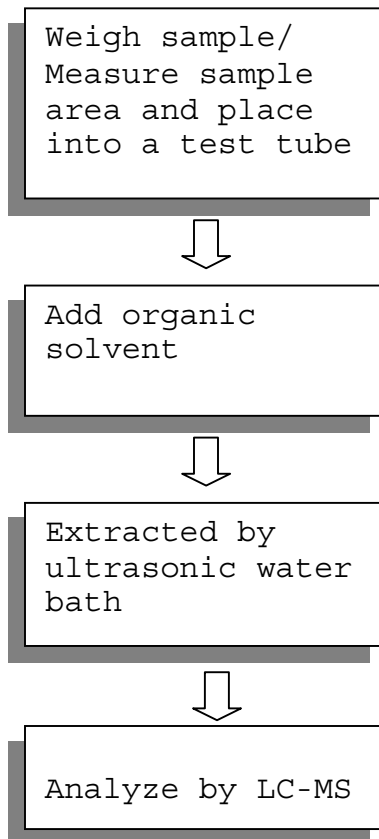
TEST REPORT

NUMBER: WUXH00002013

TESTS CONDUCTED

MEASUREMENT FLOWCHART:

TEST FOR **PERFLUOROCTANE SULFONATES (PFOS) AND PERFLUOROCTANOIC ACID (PFOA)** CONTENT:



TO BE CONTINUED



TEST REPORT

NUMBER: WUXH00002013

TESTS CONDUCTED

(I) TEST RESULT SUMMARY :
HALOGEN CONTENT :

<u>TESTING ITEM</u>	<u>RESULT (ppm)</u>
	(1)
FLUORINE (F) CONTENT	ND
CHLORINE (Cl) CONTENT	ND
BROMINE (Br) CONTENT	ND
IODINE (I) CONTENT	ND

REMARKS : ppm = PARTS PER MILLION = mg/kg
ND = NOT DETECTED

TESTED COMPONENT: (1) BLACK BODY PLASTIC.

DATE SAMPLE RECEIVE: MAY 12, 2010

TEST PERIOD: MAY 12, 2010 TO MAY 14, 2010

(II) TEST METHOD :

<u>TESTING ITEM</u>	<u>TESTING METHOD</u>	<u>REPORTING LIMIT</u>
HALOGEN (F, Cl, Br, I) CONTENT	WITH REFERENCE TO EN 14582:2007 BY COMBUSTION IN A CALORIMETRIC BOMB AND DETERMINED BY ION CHROMATOGRAPHY	50 ppm

REMARKS : REPORTING LIMIT = QUANTITATION LIMIT OF ANALYTE IN SAMPLE

TO BE CONTINUED

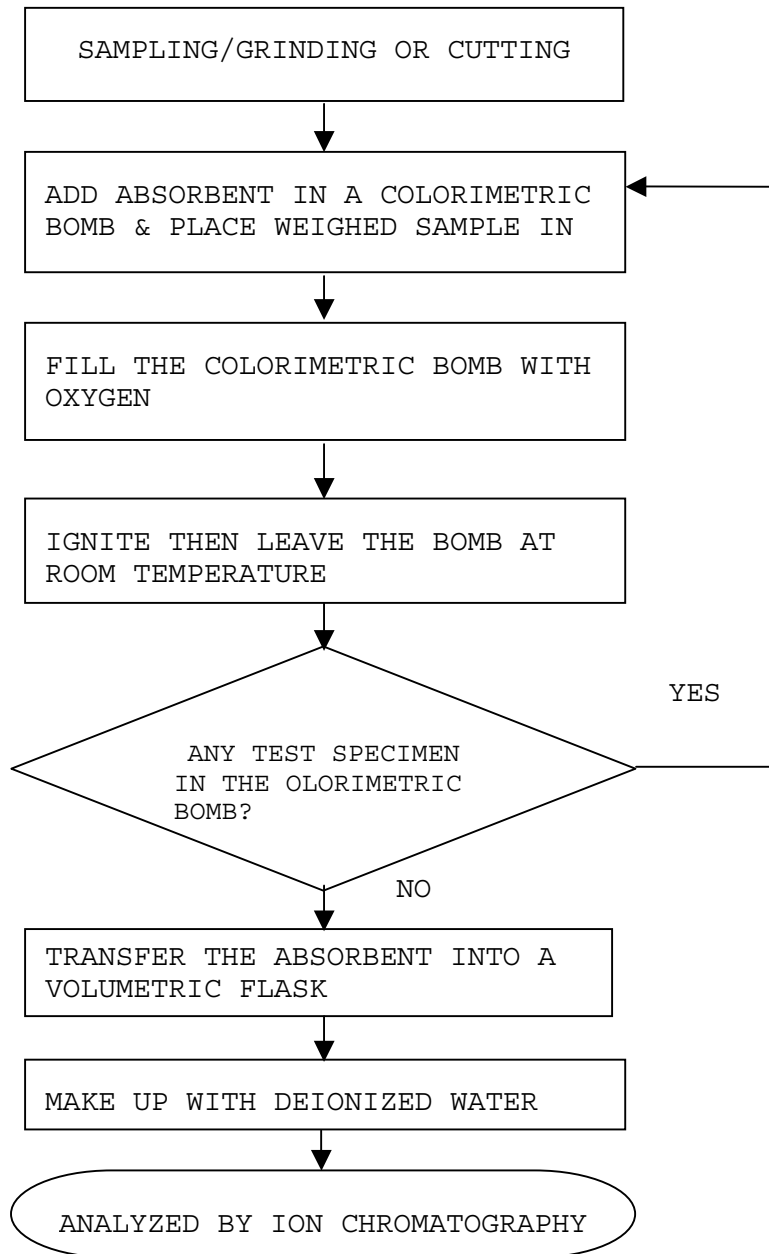


TEST REPORT

NUMBER: WUXH00002013

TESTS CONDUCTED

(III) MEASUREMENT FLOWCHART:
TEST FOR HALOGEN CONTENT
REFERENCE METHOD: EN 14582:2007



CHEMIST: FRED WANG/ ALLY WAN

TO BE CONTINUED



TEST REPORT

NUMBER: WUXH00002013

TESTS CONDUCTED

TOTAL (Sb) CONTENT

AS PER CLIENT'S REQUEST, ACID DIGESTION METHOD WAS USED AND TOTAL CONTENT WAS DETERMINED BY INDUCTIVELY COUPLED ARGON PLASMA SPECTROMETRY.

<u>TESTED COMPONENT</u>	<u>RESULT IN ppm</u>
(1)	<5

ppm = PARTS PER MILLION =MG/KG
< = LESS THA

TESTED COMPONENT: (1)BLACK BODY PLASTIC.
DATE SAMPLE RECEIVED : MAY 12, 2010
TESTING PERIOD : MAY 12, 2010 TO MAY 14, 2010

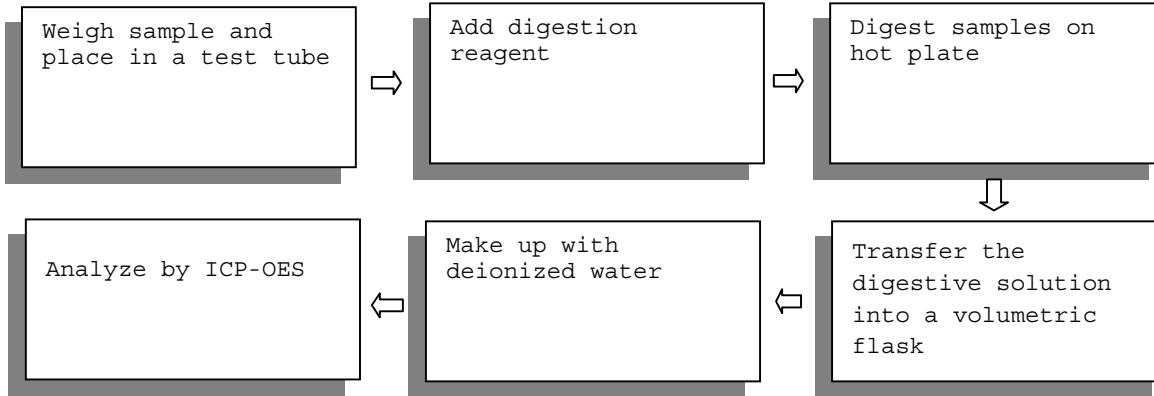
TO BE CONTINUED

TEST REPORT

NUMBER: WUXH00002013

TESTS CONDUCTED
MEASUREMENT FLOWCHART

1. TEST FOR Sb CONTENTS



TO BE CONTINUED

TEST REPORT

NUMBER: WUXH00002013

TESTS CONDUCTED

PHOTO



END OF REPORT